

ORTHOPAEDIC
RESEARCH
FELLOWSHIP



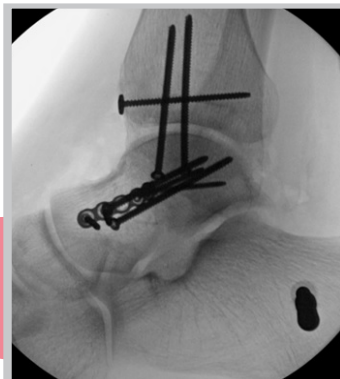


Department of Orthopaedics
Division of Orthopaedic Traumatology
110 South Paca Street, Suite 300
Baltimore, MD 21201
Tel: 410.328.9579

The R Adams Cowley Shock Trauma Center (STC) Orthopaedic Traumatology Research Fellowship boasts a comprehensive research program with a large number of prospective clinical trials, 9 dedicated research personnel and over \$30 million of extramural funding from the DoD, PCORI, OTA and OREF. We are proud of our tradition of excellence in the advancement of orthopaedic research.

Our program offers several aspects that we believe are strengths:

- 1. Dedicated Clinical Faculty:** Our faculty comprises national experts in all phases of orthopaedic trauma who have dedicated a substantial portion of their lives to the education of fellows and residents. Research fellows will receive mentorship and personalized guidance from leading academic orthopaedic trauma surgeons.
- 2. Networking Opportunities:** Shock Trauma is the principal orthopaedic trauma training site for residents from several programs, including the University of Maryland, Columbia University, Mayo Clinic, Union Memorial Hospital, The Walter Reed Army Medical Center, Bethesda Naval Medical Center, Tripler Medical Center, Jefferson and Lennox Hill. We offer one of the nation's premier fellowships in orthopaedic trauma and graduate 5 fellows yearly. There are ample opportunities to network with residents, fellows and attendings from a wide range of programs spanning the entire nation.
- 3. Strong Didactic Program:** The STC didactic program involves teaching conferences 5 days a week. The goal of the indication conference is to review every case performed by our fellows and rotating residents. Each Wednesday and Thursday we host a curriculum of traditional lectures, augmented by a curriculum of 10 cadaver dissection sessions, six surgical skills labs and weekly article reviews. Research fellows will also have the opportunity to attend monthly Orthopaedic Grand Rounds and Morbidity & Mortality Conferences.



4. Large Variety of Research: We are a large, active clinical research program that typically runs 15 prospective trials at any one time. Our resources include a fully equipped biomechanics laboratory, 6 full-time research coordinators, a medical editor and a prospective trauma database. Research fellows will work on several prospective, randomized clinical trials and have the opportunity to work on many more retrospective longitudinal studies, including self-directed projects and collaborative projects with our orthopaedic trauma fellows.

5. Academic Conference Presence: The Division of Orthopaedic Traumatology boasts a strong track record of success for our research projects and a high level of academic production overall. Many of our projects are completed by February 1st of each year, so each research fellow has the opportunity to be included in several research project submissions for presentation at Orthopaedic Trauma Association (OTA) and American Academy of Orthopaedic Surgeons (AAOS) meetings.

6. High Degree of Productivity: Our research fellows continue to increase their productivity each year. Research fellows will have the opportunity to be first author on all abstracts and manuscripts they significantly contribute to and should expect at least 8-10 publications or more depending on the individual's motivation and work ethic.

7. Successful Orthopaedic Match: This year-long clinical research fellowship will undoubtedly augment the applicant's CV and provide a solid foundation for a future career in academic orthopaedics. All previous medical students have successfully matched into an orthopaedic surgery residency. We fully expect all future applicants to match and we are dedicated to providing our students with a world-class education along with personalized guidance during the match process.

We are proud of the current state of our research fellowship but are always striving to make improvements. We believe it is this attitude that has helped us to improve upon the strong tradition that has been passed down to us by the faculty who came before us and will allow us to continue to help produce the next generation of leaders in orthopaedic surgery.

Thank you again for your interest in our research fellowship,

THE SHOCK TRAUMA ORTHOPAEDIC FACULTY:

Robert Beer, MD

Christopher Langhammer, MD, PhD

Raymond A. Pensey, MD

Jean-Claude D'Alleyrand, MD

Christopher T. LeBrun, MD

Andrew N. Pollak, MD

W. Andrew Eglseder, MD

Theodore T. Manson, MD

Marcus F. Sciadini, MD

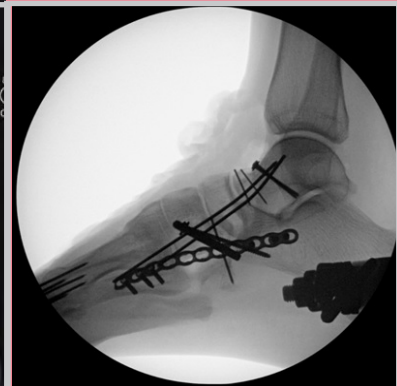
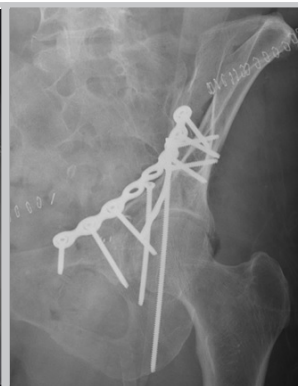
Todd Jaebлон, DO

Jason W. Nascone, MD

Gerard P. Slobogean, MD

Aaron Johnson, MD

Robert V. O'Toole, MD



CURRENT RESEARCH FELLOWS



"STC has given me the opportunity to expand my orthopaedic knowledge and has provided an excellent team-based learning environment. As a current student and aspiring clinician, I have been able to work with patients as well as pursue academic areas of orthopaedic surgery under the guidance of the outstanding staff and physicians at this institution."

Jared Atchison, Class of 2019
New York Medical College, MS-III, Valhalla, New York



"This orthopaedic research fellowship has had an unparalleled impact on my future as a physician. I am grateful to have been granted the research and clinical opportunities few programs can rival, while working alongside some of the brightest minds in the world of orthopaedic traumatology. The knowledge, experiences and mentors I have gained throughout my time here will undoubtedly prepare me for a successful career in medicine."

Zachary Hannan, Class of 2019
University of Maryland, BS, College Park, Maryland



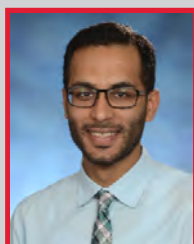
"The orthopaedic trauma research fellowship at Shock Trauma is an all-encompassing clinical program. I'm able to interact with a diverse patient population while gaining valuable knowledge about orthopaedic medicine and attaining experience that will give me a head start in my future career as a physician."

Alexandra Mulliken, Class of 2019
University of Georgia, BS, Athens, Georgia



"Deciding to accept a research fellowship position at Shock Trauma was the smartest decision I have made in my post-graduate academic career. Being immersed in the world of orthopaedic traumatology has developed my fund of knowledge immensely and the research program here is second to none. I recommend applying for this position to any third-year medical student who is intent on matching into orthopaedic surgery."

Michael Schloss, Class of 2019
Alabama College of Osteopathic Medicine, MS-III, Dothan, Alabama



"The Shock Trauma Center is the best combination of academic and clinical experience, with direct exposure to those on the forefront of orthopaedic surgery both in and out of the operating room. The department is certainly productive from a research standpoint and methodically leads the way in high impact literature. You'll have no shortage of opportunities to become a better physician and student overall as the team enthusiastically mentors and teaches everyone who is training at this very busy, diverse and high-volume center that is well-known around the world."

Raza Zaidi, Class of 2019
Cooper Medical School, MS-III, Camden, New Jersey

PREVIOUS RESEARCH FELLOWS

Mitchell Baker (2017-2018)

Pre-fellowship education University of Maryland, College Park, B.S. in Biological Sciences
Post-fellowship goal Medical School
Number of publications obtained 7
Current status University of Maryland School of Medicine, MS-I

Daniel Connelly (2016-2018)

Pre-fellowship education University of Maryland, College Park, B.S. in Bioengineering
Post-fellowship goal Medical School
Number of publications obtained 18
Current status Eastern Virginia Medical School, MS-I

Marckenley Isaac (2017-2018)

Pre-fellowship education Florida State University College of Medicine, MS-III
Post-fellowship goal Orthopaedic Surgery Residency
Number of publications obtained 9
Current status Florida State University College of Medicine, MS-IV

Dimitrius Marinos (2016-2018)

Pre-fellowship education Liberty University, B.S. in Biomedical Science
Post-fellowship goal Physician Assistant School
Number of publications obtained 10*
Current status Lock Haven University, PA-S

Ugo Udogwu (2017-2018)

Pre-fellowship education Icahn School of Medicine at Mount Sinai, MS-III
Post-fellowship goal Orthopaedic Surgery Residency
Number of publications obtained 9*
Current status Icahn School of Medicine at Mount Sinai, MS-IV

Daniel Mascarenhas (2016-2017)

Pre-fellowship education University of Maryland School of Medicine, MS-III
Post-fellowship goal Orthopaedic Surgery Residency
Number of publications obtained 16
Current status Rutgers Robert Wood Johnson Orthopaedic Residency, PGY-I

Bradley Reahl (2015-2017)

Pre-fellowship education University of Maryland, College Park, B.S. in Biological Sciences
Post-fellowship goal Medical School
Number of publications obtained 12
Current status Boston University, M.S. Candidate in Medical Clinical Sciences

Peter Berger (2015-2016)

Pre-fellowship education University of Maryland, College Park, B.S. in Biological Sciences
Post-fellowship goal Medical School
Number of publications obtained 12
Current status George Washington School of Medicine and Health Sciences, MS-II

Ryan Montalvo (2015-2016)

Pre-fellowship education Liberty University, B.S. in Molecular Biology
Post-fellowship goal PhD in Microbiology
Number of publications obtained 9
Current status University of South Carolina, PhD Candidate in Exercise Science

Carrie Schoonover (2015-2016)

Pre-fellowship education Bryn Mawr College, B.S. in Biology
Post-fellowship goal Medical School
Number of publications obtained 13
Current status Lake Erie College of Osteopathic Medicine, MS-III

Max Coale (2014-2015)

Pre-fellowship education Princeton University
Post-fellowship goal Medical School
Number of publications obtained 24
Current status University of Maryland School of Medicine, MS-III

Timothy Costales (2014-2015)

Pre-fellowship education University of Maryland School of Medicine, MS-III
Post-fellowship goal Orthopaedic Surgery Residency
Number of publications obtained 18
Current status University of Maryland Orthopaedic Residency, PGY-III

Timothy Zerhusen (2014-2015)

Pre-fellowship education University of Maryland, College Park, B.S. in Biological Sciences
Post-fellowship goal Medical School
Number of publications obtained 15
Current status Uniformed Services University of the Health Sciences, MS-III

*Total number of publications not yet reported

Research Fellows' Projects: Selected Publications

- Montalvo RN, Natoli RM, O'Hara NN, Schoonover C, Berger PZ, Reahl GB, Shirtliff ME, Manson TT, Torbert JT, O'Toole RV, Joshi M. Variations in the organisms causing deep surgical site infections in fracture patients at a level I trauma center. *J Orthop Trauma*. 2018 Dec;32(12):e475-e481.
- Ross KA, O'Halloran K, Castillo RC, Coale M, Fowler J, Nascone JW, Sciadini MF, LeBrun CT, Manson TT, Carlini AR, Jolissaint JE, O'Toole RV. Prediction of tibial nonunion at the 6-week time point. *Injury*. 2018 Nov;49(11):2075-2082.
- Christian MW, Griffith C, Schoonover C, Zerhusen T Jr, Coale M, OHara N, Henn RF 3rd, OToole RV, Sciadini M. Construct validation of a novel hip fracture fixation surgical stimulator. *J Am Acad Orthop Surg*. 2018 Oct 1; 26(19):689-697.
- Reahl GB, Marinos D, O'Hara NN, Howe A, Degani Y, Wise B, Maceroli M, O'Toole RV. Risk factors for knee stiffness surgery after tibial plateau fracture fixation. *J Orthop Trauma*. 2018 Sep;32(9):e339-e343.
- Dreizin D, Bodanapally U, Mascarenhas D, O'Toole RV, Tirada N, Issa G, Nascone J. Quantitative MDCT assessment of binder effects after pelvic ring disruptions using segmented pelvic haematoma volumes and multiplanar caliper measurements. *Eur Radiol*. 2018 Sep;28 (9):3953-3962.
- Mascarenhas D, Connelly D, O'Hara NN, Gage MJ, Coale M, Manson TT, O'Toole RV. Radiographic predictors of symptomatic locking screw removal after treatment of tibial fractures with intramedullary nails. *Injury*. 2018 Sep 10; 49(12):2284-2289.
- Okike K, Berger PZ, Schoonover C, O Toole RV. Do orthopaedic resident and fellow case logs accurately reflect surgical case volume? *J Surg Educ*. 2018 Jul - Aug;75(4):1052-1057.
- Shiu B, Le E, Jazini E, Weir TB, Costales T, Caffes N, Paryavi E, O'Hara N, Gelb DE, Koh EY, Ludwig SC. Postoperative deep vein thrombosis, pulmonary embolism and myocardial infarction: Complications after therapeutic anticoagulation in the patient with spine trauma. *Spine*. 2018 Jul 1;43(13):E766-E772.
- Ochenjele G, Reid KR, Castillo RC, Schoonover CD, Montalvo RN, Manson TT, Sciadini MF, Nascone JW, Carlini AR, O'Toole RV. Predictors of unplanned reoperation after operative treatment of pelvic ring injuries. *J Orthop Trauma*. 2018 Jul;32(7):e245-e250.
- Potter GD, Mascarenhas D, Sciadini MF, Carlini AR, O'Toole RV, Pensy RA. What is the ideal starting point for an olecranon screw? An anatomic cadaveric study. *J Orthop Trauma*. 2018 Jun;32(6):313-319.
- Dreizin D, Bodanapally U, Boscak A, Tirada N, Issa G, Nascone JW, Bivona L, Mascarenhas D, O'Toole RV, Nixon E, Chen R, Siegel E. CT prediction model for major arterial injury after blunt pelvic ring disruption. *Radiology*. Jun;287(3):1061-1069.
- Hovis JP, Montalvo R, Marinos D, Joshi M, Shirtliff M, O'Toole RV, Manson TT. Intraoperative vancomycin powder reduces staphylococcus aureus surgical site infections and biofilm formation on fixation implants in a rabbit model. *J Orthop Trauma*. 2018 May;32(5):263-268.
- Haac BE, Van Besien R, O'Hara NN, Slobogean GP, Manson TT, O'Toole RV, Johal H, Berger PZ, Reahl GB, Marinos D, Degani Y, Mascarenhas D, Connelly D, Scalea TM, Stein DM. Post-discharge adherence with venous thromboembolism prophylaxis after orthopaedic trauma: Results from a randomized controlled trial of aspirin versus low molecular weight heparin. *J Trauma Acute Care Surg*. 2018 Apr;84(4):564-574.
- Gitajn I, Connelly D, Mascarenhas D, Breazeale S, Berger P, Schoonover C, Martin B, O'Toole RV, Pensy R, Sciadini M. Is prescribed lower extremity weight-bearing status after geriatric lower extremity trauma associated with increased mortality? *Injury*. 2018 Feb;49(2):404-408.
- Shannon SF, Wagner ER, Houdek MT, Mascarenhas D, Pensy RA, Eglseder WA. Osteosynthesis of AO/OTA 13-C3 distal humeral fractures in patients older than 70 years. *J Shoulder Elbow Surg*. 2018 Feb;27(2):291-297.
- Reahl GB, OHara NN, Coale M, OHara LM, Castillo R, OToole RV, Slobogean GP. Is lateral femoral nailing associated with increased intensive care unit days? A propensity-matched analysis of 848 cases. *J Orthop Trauma*. 2018 Jan;32(1):39-42.
- Kaat AJ, Rothrock NE, Vrahas MS, O'Toole RV, Buono SK, Zerhusen T Jr, Gershon RC. Longitudinal validation of the PROMIS physical function item bank in upper extremity trauma. *J Orthop Trauma*. 2017 Oct;31(10):e321-e326.
- Maceroli MA, Gage MJ, Wise BT, Connelly D, Ordonio K, Castillo RC, Jarman MP, Nascone JW, O'Toole RV, Sciadini MF. Risk factors for failure of bone grafting of tibia nonunions and segmental bone defects: A new preoperative risk assessment score. *J Orthop Trauma*. 2017 Oct;31 Suppl 5:S55-S59.

- Gitajn IL, Castillo R, Breazeale S, Schoonover C, Berger P, Huang Y, O'Hara N, O'Toole RV, Sciadini MF. Survivorship after high-energy geriatric trauma. *J Orthop Trauma*. 2017 Aug;31(8):e230-e235.
- Dreizin D, Nascone J, Davis DL, Mascarenhas D, Tirada N, Chen H, Bodanapally UK. Can MDCT unmask instability in binder-stabilized pelvic ring disruptions? *AJR Am J Roentgenol*. 2016 Dec;207(6):1244-1251.
- O'Halloran K, Coale M, Costales T, Zerhusen T Jr, Castillo RC, Nascone JW, O'Toole RV. Will my tibia fracture heal? Predicting nonunion at the time of definitive fixation based on commonly available variables. *Clin Orthop Relat Res*. 2016 Jun;474(6):1385-95.
- Matuszewski PE, Costales T, Zerhusen T, Coale M, Mehta S, Pollak AN, O'Toole RV. Is the digital divide for orthopaedic trauma patients a myth? Prospective cohort study on use of a custom internet site. *J Orthop Trauma*. 2016 Jul;30(7):e246-51.

Research Fellows' Projects: Conference Publications & Presentations

- Mascarenhas D, Connelly D, O'Hara N, Gage M, Coale M, Manson T, O'Toole RV. Radiographic Predictors of Symptomatic Locking Bolt Removal in Intramedullary Tibial Nails. Poster Presentation, American Academy of Orthopaedic Surgeons Annual Meeting. (New Orleans, LA 03/18).
- Maceroli M, Gage M, Connelly D, Castillo R, Jarman M, Wise B, Nascone J, O'Toole RV, Sciadini M. Risk Factors for Failure of Surgery to Promote Bone Healing for Tibial Nonunions and Acute Cortical Defects: A New Preoperative Risk Assessment Score. Poster Presentation, American Academy of Orthopaedic Surgeons Annual Meeting. (New Orleans, LA 03/18).
- Haac B, Van Besien R, O'Hara N, Slobogean G, Manson T, O'Toole RV, Johal H, Berger P, Reahl G, Marinos D, Degani Y, Mascarenhas D, Connelly D, Scalea T, Stein D. Outpatient Adherence with Venous Thromboembolism Prophylaxis after Orthopaedic Trauma. Poster Presentation, American Academy of Orthopaedic Surgeons Annual Meeting. (New Orleans, LA 03/18).
- Hovis J, Montalvo R, Marinos D, Joshi M, Shirliff M, O'Toole RV, Manson T. Intraoperative Vancomycin Powder Reduces Staphylococcus aureus Surgical Site Infections and Biofilm Formation on Fixation Implants in a Rabbit Model. Paper Presentation, American Academy of Orthopaedic Surgeons Annual Meeting. (New Orleans, LA 03/18).
- Gage M, Marinos D, Reahl G, Maceroli M, Wise B, Potter III G, Castillo R, O'Toole RV, Manson T. Predictors for Poor Mid-Term Outcome after Pilon Fracture Surgery: Are We Focusing on the Wrong Factors? Paper Presentation, American Academy of Orthopaedic Surgeons Annual Meeting. (New Orleans, LA 03/18).
- Gitajn I, Connelly D, Mascarenhas D, Breazeale S, Berger P, Schoonover C, Martin B, O'Toole RV, Castillo R, Bosse M, Jevsevar D, Reider L, Scharfstein D, Pollak A. Does Postoperative Lower-Extremity Weight Bearing Restriction after Geriatric Fracture Affect Mortality? Paper Presentation, American Academy of Orthopaedic Surgeons Annual Meeting. (New Orleans, LA 03/18).
- Montalvo R, Natoli R, O'Hara N, Schoonover C, Berger P, Reahl B, Shirliff M, Manson TT, Torbert J, O'Toole RV, Joshi M. Variations in the Organisms Causing Deep Surgical Site Infections in Fracture Patients at a Level I Trauma Center (2006-2015). Poster Presentation, Orthopaedic Trauma Association. (Vancouver, BC 10/17).
- Wise B, Connelly D, Rocca M, Mascarenhas D, Huang Y, Gage M, Joshi M, Castillo R, O'Toole RV. A Predictive Score for Determining Risk of Surgical Site Infection After Orthopaedic Trauma Surgery. Poster Presentation, Orthopaedic Trauma Association. (Vancouver, BC 10/17).
- Weber A, Christian M, Coale M, Griffith C, O'Hara N, Henn R, O'Toole RV, Sciadini M. Can the AAOS/OTA Hip Fracture Skills Simulator Improve Your Surgical Skills? Validation of Computer-Based Force-Feedback Simulation Platform. Poster Presentation, Orthopaedic Trauma Association. (Vancouver, BC 10/17).

Research Fellows' Projects: Conference Publications & Presentations

- Maceroli M, Connelly D, Ordonio K, Castillo R, Jarman M, Nascone J, O'Toole RV, Sciadini M. Risk Factors for Failure of Surgery to Promote Bone Healing for Tibia Nonunions and Acute Cortical Defects: A New Preoperative Risk Assessment Score. Poster Presentation, Orthopaedic Trauma Association. (Vancouver, BC 10/17).
- Reahl B, Marinos D, O'Hara N, Wise B, Maceroli M, O'Toole RV. Risk Factors for Surgery to Treat Knee Stiffness Following Tibial Plateau Fracture Fixation. Poster Presentation, Orthopaedic Trauma Association. (Vancouver, BC 10/17).
- Wise B, Connelly D, Rocca M, Mascarenhas D, Yanjie H, Maceroli M, Joshi M, Castillo R, O'Toole RV. Does the New CDC Definition of Postoperative Infection Make Sense for Orthopaedic Trauma? Poster Presentation, Orthopaedic Trauma Association. (Vancouver, BC 10/17).
- O'Toole RV, Carlini A, Jolissaint J, O'Halloran K, Ross K, Coale M, Fowler J, Nascone JN, Sciadini MF, LeBrun C, Manson TT, Castillo R. NURD 2.0: Prediction of Tibial Non-Union at Any Time within 3 Months of Injury. Paper Presentation, Orthopaedic Trauma Association. (Vancouver, BC 10/17).
- Berger PZ, Campbell K, Castillo RC, Coale M, Costales T, Griffith CK, O'Toole RV, Zerhusen TJ. Extended Use of Opioids after Orthopaedic Trauma Is More Closely Associated with Psychosocial than Injury Factors. Podium Presentation, American Academy of Orthopaedic Surgeons Annual Meeting. (San Diego, CA 03/17).
- Christian MW, Coale M, Griffith CK, Henn RF, O'Hara NN, O'Toole RV, Schoonover C, Sciadini MF, Zerhusen TJ. Can the AAOS/OTA Hip Fracture Skills Simulator Measure Your Surgical Skill? Construct Validation of a Computer-based Force-feedback Simulation Platform. Podium Presentation, American Academy of Orthopaedic Surgeons Annual Meeting. (San Diego, CA 03/17).
- Castillo RC, Ding A, Manson TT, Montalvo R, Nascone JW, O'Toole RV, Reahl GB, Sciadini MF. Risk Factors for Early Reoperation following Operative Treatment of Acetabular Fractures. Podium Presentation, American Academy of Orthopaedic Surgeons Annual Meeting. (San Diego, CA 03/17).
- Sciadini MF. Predictors of Unplanned Reoperation after Operative Treatment of Pelvic Ring Injuries. Podium Presentation, American Academy of Orthopaedic Surgeons Annual Meeting. (San Diego, CA 03/17).
- Berger PZ, Castillo RC, Griffith CK, Manson TT, O'Toole RV, Reahl GB. Predictors of Poor Outcomes after Bicondylar Tibial Plateau Fractures: Is Varus Alignment Protective? Podium Presentation. American Academy of Orthopaedic Surgeons Annual Meeting. (San Diego CA 03/17).
- Griffith C, Berger P, Costales T, Coale M, Zerhusen T, Campbell K, Castillo R, O'Toole RV. "Extended Use of Opioids after Orthopaedic Trauma Is More Closely Associated with Psychosocial than Injury Factors." Poster Presentation, OTA Annual Meeting. (National Harbor, MD)
- Christian M, Griffith C, Schoonover C, Coale M, Zerhusen T, O'Hara N, Henn R, O'Toole RV, Sciadini M. "Construct Validation of a Computer-Based Force-Feedback Simulation Platform." Poster Presentation, OTA Annual Meeting. (National Harbor, MD 10/16)
- Matuszewski P, Costales T, Zerhusen T, Coale M, O'Toole RV. "Novel Application of Exhaled Carbon Monoxide Monitors: Smoking Cessation in Orthopaedic Trauma Patients." Poster Presentation, OTA Annual Meeting. (National Harbor, MD 10/16)
- Gitajn I, Breazeale S, Berger P, Schoonover C, Castillo R, O'Toole RV, Sciadini M. "Survivorship after High-Energy Geriatric Trauma." Poster Presentation, OTA Annual Meeting. (National Harbor, MD 10/16)
- Gitajn I, Breazeale S, Berger P, Schoonover C, Castillo R, O'Toole RV, Boulton C. "Are Geriatric Victims of High-Energy Trauma Likely to Return to Functional Independence?" Poster Presentation, OTA Annual Meeting. (National Harbor, MD 10/16)

- Ross K, O'Halloran K, Coale M, Fowler J, Nascone J, Sciadini M, LeBrun C, Manson T, Castillo R, O'Toole RV. "Prediction of Tibial Nonunion at the 6-Week Time Point." Poster Presentation, OTA Annual Meeting. (National Harbor, MD)

- Griffith C, Berger P, Reahl G, Castillo R, O'Toole RV, Manson T. "Longer-Term Outcomes after Bicondylar Tibial Plateau Fractures: What Are the Risk Factors for Poor Outcome?" Poster Presentation, OTA Annual Meeting. (National Harbor, MD 10/16)

- Harro J, Montalvo R, Manson T, O'Toole RV, Joshi M, Zerhusen T, Natoli R, Shirtliff M. Clinical Validation of a Novel ELISA Serum Assay Test for Detection of Staphylococcus aureus Biofilm Antibodies in Serum of Orthopaedic Trauma Patients. Podium Presentation, OTA Annual Meeting. (National Harbor, MD 10/16)

- Cunningham B, Ali A, Zaman S, Montalvo R, Reahl B, Rotunno G, Kark J, Bender M, Miller B, Basmajian H, McLemore R, Shearer D, O'Toole RV, Obremsky W, Sagi C. Immediate Weight Bearing as Tolerated Has Improved Outcomes without increased Risk of Reoperation after Intramedullary Fixation for Subtrochanteric Fractures Compared with Modified Weight Bearing. Podium Presentation, OTA Annual Meeting. (National Harbor, MD 10/16)

- Ochenjele G, Reid K, Castillo R, Schoonover C, Montalvo R, Manson T, Sciadini M, Nascone J, O'Toole RV. "Predictors of Unplanned Reoperation after Operative Treatment of Pelvic Ring Injuries." Podium Presentation, OTA Annual Meeting. (National Harbor, MD 10/16)

- Ding A, O'Toole RV, Castillo R, Reahl G, Montalvo R, Sciadini M, Nascone J, Manson T. "Risk Factor for Early Reoperation Following Operative Treatment of Acetabular Fractures." Podium Presentation, OTA Annual Meeting. (National Harbor, MD 10/16)

- Johal H, Costales T, Coale M, Christian M, O'Toole RV, Manson TT. "Complication Profile of Enoxaparin Use in Orthopaedic Trauma Patients." Poster Presentation, American Academy of Orthopaedic Surgeons. (Tampa, FL, 3/16)

- Wadir R, Costales T, Coale M, Zerhusen TJ, Joshi M, O'Toole RV. "Does Vancomycin Powder Decrease Surgical Site Infection in High-Risk Operatively Treated Fractures?" Podium Presentation American Academy of Orthopaedic Surgeons. (Tampa, FL, 3/16)

- O'Halloran KP, Coale M, Costales T, Zerhusen TJ, Castillo RC, Nascone JW, O'Toole RV. "A Predictive Model of Tibial Shaft Fracture Nonunion at the Time of Definitive Fixation." Podium Presentation American Academy of Orthopaedic Surgeons. (Tampa, FL, 3/16)

- Johal H, Costales T, Christian M, Haac B, Coale M, O'Toole RV, Manson T. "Complications of Enoxaparin Use in Orthopaedic Trauma Patients." Poster Presentation, Orthopaedic Trauma Association. San Diego, CA, 10/15)

- Jester, A, Ruland C, Paryavi E, Coale M, Zerhusen T, O'Toole RV. "Do Patients Know Their Postoperative Plan?: A Prospective Cohort Study of Orthopaedic Trauma Patients." Podium Presentation, Orthopaedic Trauma Association. (San Diego, CA, 10/15)

- Qadir R, Costales T, Coale M, Zerhusen T, Joshi M, O'Toole RV. "Topical Vancomycin Powder Decreases the Incidence of Staphylococcus aureus Infections in Operatively Treated Fractures." Podium Presentation, Orthopaedic Trauma Association. (San Diego, CA, 10/15)

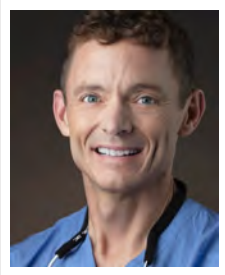
- O'Halloran K, Coale M, Costales T, Zerhusen T, Castillo R, Nascone J, O'Toole RV. "Can Tibial Shaft Nonunions Be Predicted at the Time of Nail Fixation?" Podium Presentation, Orthopaedic Trauma Association. (San Diego, CA, 10/15)

OUR ORTHOPAEDIC TRAUMA FACULTY

THEODORE T. MANSON, MD
Associate Professor of Orthopaedics



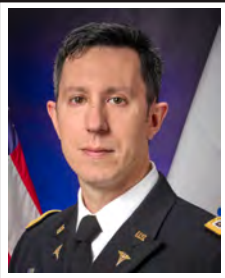
ROBERT BEER, MD
Assistant Professor of Orthopaedics



JASON W. NASCONE, MD
Associate Professor of Orthopaedics



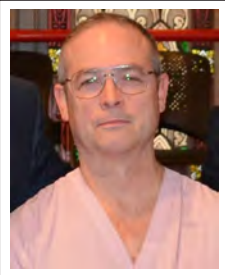
JEAN-CLAUDE D'ALLEYRAND, MD
*Clinical Associate Professor of Orthopaedics
(non-adjunct faculty)*



ROBERT V. O'TOOLE, MD
*Professor and Head, Division of
Orthopaedic Traumatology,
Fellowship Director*



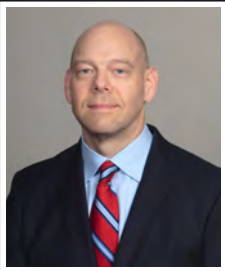
W. ANDREW EGLSEDER, JR, MD
Professor of Orthopaedics



RAYMOND A. PENSY, MD
Associate Professor of Orthopaedics



TODD JAEBLON, DO
Associate Professor of Orthopaedics



ANDREW N. POLLAK, MD
*The James Lawrence Kernan
Professor and Chair*



CHRISTOPHER LANGHAMMER, MD, PHD
Assistant Professor of Orthopaedics



MARCUS F. SCIADINI, MD
Professor of Orthopaedics



CHRISTOPHER T. LEBRUN, MD
*Clinical Assistant Professor
of Orthopaedics*



GERARD SLOBOGAN, MD
*Associate Professor
of Orthopaedics*



OUR RESEARCH COORDINATORS

YASMIN DEGANI MPH



HALEY DEMYANOVICH MPS



BLESSING ENOBUN MD, MPH



ANDREA HOWE BS



KATHERINE ORDONIO MPH



JOSHUA RUDNICKI BS





2018 ORTHO TRAUMA ATTENDING^{}*

Shown left to right:

**GERARD P. SLOBOGEAN, MD · ANDREW N. POLLAK, MD ·
JASON W. NASCONE, MD · RAYMOND A. PENSY, MD ·
ROBERT V. O'TOOLE, MD · CHRISTOPHER LANGHAMMER, MD, PHD ·
CHRISTOPHER T. LEBRUN, MD**

*Not pictured in the group photo above are Robert Beer, MD; Jean-Claude D'Alleyrand, MD; W. Andrew Eglseder, MD; Todd Jaebon, DO; Aaron Johnson, MD; Theodore T. Manson, MD; and Marcus F. Sciadini, MD.

PAST FACULTY

Romney Andersen, MD; Howard Bathon, MD; Michael Bosse, MD; Christina Boulton, MD;
Bruce Browner, MD; Robert Brumback, MD; Andrew Burgess, MD; John Carbone, MD;
David Carmack, MD; Carol Copeland, MD; Cullen Griffith, MD; Robert Harris, MD;
Alan Jones, MD; Harry Molligan, MD; Greg Osgood, MD; Ebrahim Paryavi, MD, MPH;
Attila Poka, MD; Jide Tinubu, MD; Clifford Turen, MD



Living in Baltimore

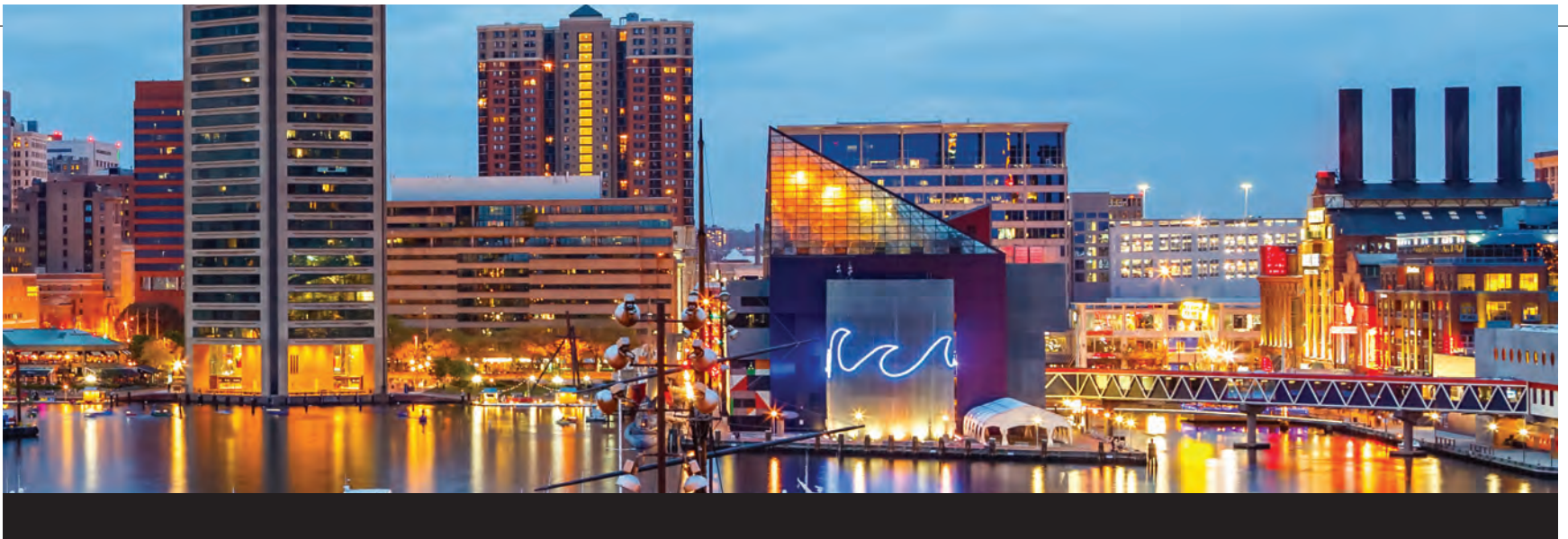
BALTIMORE FACTS

- **Population** of Baltimore, approximately 600,000.
- **Located** 38 miles north of Washington, DC; 99 miles south of Philadelphia; 188 miles south of New York, NY
- **Weather:** relatively temperate climate with July being the warmest month (average high 91°F; average low, 73°F) and January being the coolest (average high 44°F; average low, 29°F); average annual snowfall, 20 inches
- **Education** options include public schools in the city and surrounding counties and many top-tier private schools
- Strong network of **family support** and easily accessible **family-friendly attractions**
- Outstanding collection of **dining experiences**
- Many **outdoor activities** and a **vibrant nightlife**

EASY ACCESS TO DC, PHILADELPHIA, NEW YORK CITY, AND BEYOND

Baltimore's geographic location offers close proximity to the cultural, culinary, and natural attractions of the East Coast. Visit Washington, DC, which is an hour away, and enjoy the Smithsonian museums, the National Zoo, and a tour of the White House. Philadelphia, less than 2 hours away, and New York City, just a 3-hour drive away, are exciting destinations that are also easily accessible by train or bus. For summer fun, know that the Eastern Shore and beach communities of Maryland and Delaware are only 2½ hours away. Baltimore/Washington International Thurgood Marshall Airport is 15 minutes from the STC and provides easy access to national and international destinations.





NEARBY ATTRACTIONS, INCLUDING FAMILY-FRIENDLY THINGS TO DO

In Baltimore:

- Inner Harbor
- National Aquarium
- Maryland Science Center
- Port Discovery Children’s Museum
- The Maryland Zoo
- Harbor East (dining and shopping)
- Orioles Park at Camden Yards (Baltimore Orioles)
- M&T Bank Stadium (Baltimore Ravens)
- Babe Ruth Museum
- Visionary Arts Museum
- Walters Art Gallery
- Baltimore Museum of Art
- Hippodrome Theatre (featuring Broadway shows on tour)
- Center Stage (the state theatre of Maryland)
- Fort McHenry (where Francis Scott Key first penned the national anthem)

Nearby:

- Clark’s Elioak Farm (petting farm in Ellicott City)
- Baugher’s Orchards and Farm in Westminster (pick your own)
- NASA’s Goddard Space Flight Center in Greenbelt
- The Capital Wheel in National Harbor
- Jolly Roger Splash Mountain Water Park in Ocean City
- Summers Farm in Frederick
- Assateague Island National Seashore (see the wild ponies run)
- Adventure Sports Center International in McHenry



OUTDOOR ACTIVITIES

Enjoy running, biking, and hiking at these fabulous venues:

- Loch Raven Reservoir
- Patapsco Valley State Park
- Waterfront Promenade



ON CAMPUS

The newly completed Student Center directly across the street from the hospital includes excellent dining, a state-of-the-art gym, and an indoor pool. Membership to this facility is provided to incoming fellows for the year, compliments of the Division.



UNIVERSITY OF MARYLAND
R ADAMS COWLEY SHOCK TRAUMA CENTER

DEPARTMENT OF ORTHOPAEDICS
Division of Orthopaedic Traumatology

110 South Paca Street, Suite 300
 Baltimore, MD 21201

Nathan O'Hara, Research Manager
 E-mail: nohara@som.umaryland.edu
 Tel: 410.328.9579 • Fax: 410.328.0534



Visit our web site: <http://umm.edu/programs/shock-trauma/services/clinical/orthopaedic>